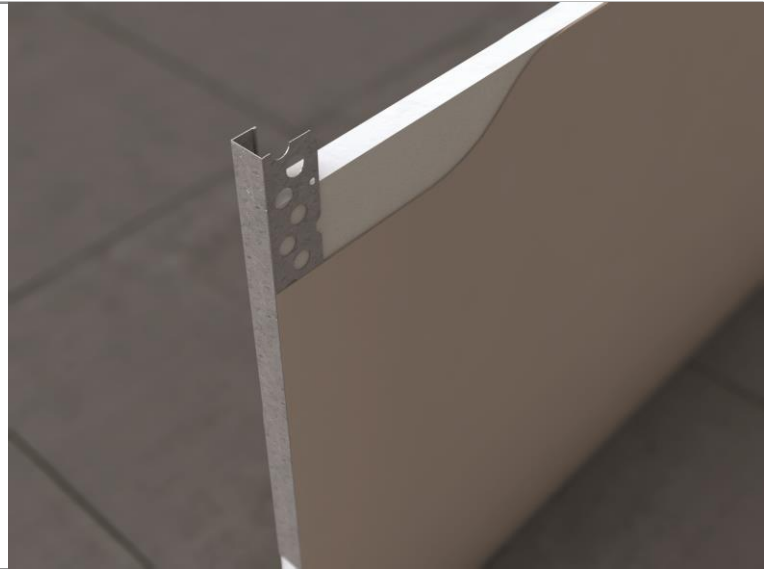


Drylining Beads

These beads provide the plasterer with the ability to produce true straight edges in drylining applications and give an excellent key for thin coat (skim) plastering. The fixing of all these products is simple and the beads give good resistance to cracking, chipping and impact damage on corners and edges.



Product

GEB Galvanised Plasterboard Edge Bead

A bead to reinforce the edges of plasterboard which can be fixed on either with the perforated flange on the face of the board by nailing and skimmed over with the short flange on the board face for a decorative finish.

Available in galvanised steel grade DX.51. Z275g to BS EN 10346:2009 for internal use in 3.0m lengths only.

Manufactured to BS EN 14353:2007+A1:2010 for internal use with plasterboard.

Sizes	Per Box:
3.0m x 9.5mm	50 lengths
3.0m x 12mm	50 lengths
3.0m x 15mm	50 lengths

Storage & Information

To prevent distortion and damage the GEB bead should be kept dry and stored above the ground on a flat surface.

Any potential corrosion in galvanised beads will only become apparent during the initial drying out period of the plaster or during periods of dampness and heavy condensation. The drying out period (which should be a maximum of 5-7 days) should be kept to a minimum.

Thickness of Steel: 0.4mm
 Perforated wing width: 25mm
 Return (solid) wing width: 11mm (9.5mm) / 9mm (12.5mm) / 7mm (15mm)

Safety Precautions

GEB Galvanised Plasterboard Edge Bead is manufactured from sheared plate and strip so may contain sharp edges. Suitable personal protection should always be used when handling/installing these products.